

Important facts about food allergies

THE PREVALENCE OF FOOD ALLERGIES IN CANADA

About
2.5 million
Canadians
self-report a
food allergy.



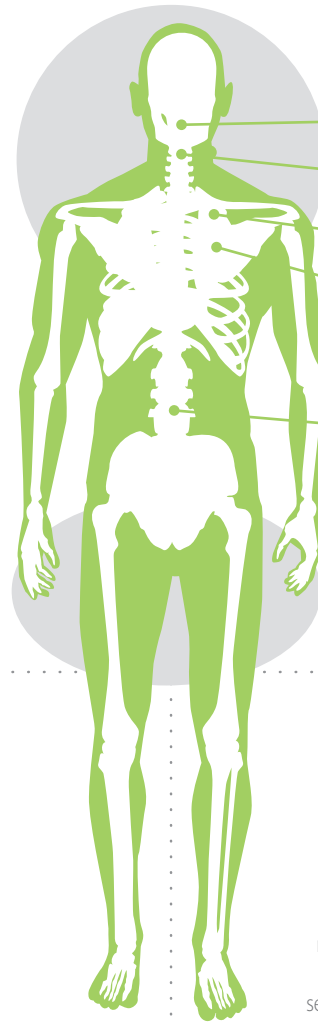
3-4%
of adults have
physician-diagnosed food allergies

5-6%
of young children have
physician-diagnosed food allergies



SIGNS AND SYMPTOMS OF A SEVERE ALLERGIC REACTION

Symptoms of a severe allergic reaction can occur within *minutes or several hours* after exposure to an allergy trigger.



- Mouth**
Itching, swelling of the lips and/or tongue
- Throat***
Itching, tightness, closure, hoarseness
- Lung***
Shortness of breath, cough, wheeze
- Heart***
Weak pulse, dizziness, passing out (due to low blood pressure)
- Skin**
Itching, hives, redness, swelling
- Gut**
Vomiting, diarrhea, cramps

The severity of previous anaphylactic reactions does not determine the severity of future reactions, which could be the same, better, or worse.

Note: The EpiPen® Auto-Injector is not indicated to prevent death associated with anaphylaxis. Because anaphylaxis is a generalized reaction, a wide variety of clinical signs and symptoms may be observed.

* Some symptoms can be life-threatening.

THE TOP 10 FOOD ALLERGENS



KNOW WHAT TO DO

 +
Administer
epinephrine, the
medicine in EpiPen®,
at the first signs of a
severe allergic reaction


Call
911 or your local
emergency number

ONLY IF REQUIRED



Repeat

Give a second dose of epinephrine
after 5-15 minutes if the reaction
continues or gets worse.
Do not inject more than 2 injections
right after each other.



PREVENTION

Avoiding your allergen is the
only effective way to prevent
anaphylactic reactions.



IMPORTANT

Even if you have sought medical
help, you must stay within close
proximity to a hospital or where
you can easily call 911 for the
next 48 hours.

EpiPen® and EpiPen Jr® (epinephrine) Auto-Injectors are indicated for the emergency treatment of anaphylactic reactions in patients who are determined to be at increased risk for anaphylaxis, including individuals with a history of anaphylactic reactions. Selection of the appropriate dosage strength is determined according to patient body weight.

EpiPen® and EpiPen Jr® Auto-Injectors are designed as emergency supportive therapy only. They are not a replacement for subsequent medical or hospital care. After administration, patients should seek medical attention immediately or go to the emergency room. For the next 48 hours, patients must stay within close proximity to a healthcare facility or where they can call 911. To ensure this product is right for you, always read and follow the label. Please consult the Consumer Information leaflet in your product package for warnings and precautions, side effects, and complete dosing and administration instructions.

For more information, visit the consumer site EpiPen.ca

© 2017 Pfizer Canada Inc., Kirkland, Quebec H9J 2M5 • Toll free: 1-877-EPIPEN1 (1-877-374-7361) • EpiPen®, EpiPen Jr® are registered trademarks of Mylan, Inc. licensed exclusively to its wholly-owned affiliate, Mylan Specialty, LP; sub-licensee, Pfizer Canada Inc., Kirkland, Quebec H9J 2M5

MEMBER OF INNOVATIVE MEDICINES CANADA

PAAB

D000059210
PP-EPI-CAN-0131-EN



Trusted for over 25 years.